

Public Document Pack

South London Waste Partnership Joint Committee

To:

Members of the Committee

London Borough of Croydon

Councillor Muhammad Ali
Councillor Patsy Cummings

Royal Borough of Kingston upon Thames

Councillor Tim Cobbett
Councillor John Sweeney
Substitutes: Councillors Stephanie Archer and Dave Ryder-Mills

London Borough of Merton

Councillor Tobin Byers – Cabinet Member for Finance
Councillor Natasha Irons – Cabinet Member for Local Environment and Green Spaces
Substitutes: Councillors Mark Allison and Martin Whelton

London Borough of Sutton

Councillor Manuel Abellan – Chair of the Environment and Sustainable Transport Committee
Councillor Ben Andrew – Vice-Chair of the Environment and Sustainable Transport Committee
Substitute: Councillor Hanna Zuchowska

A meeting of the **South London Waste Partnership Joint Committee** will be held on **Wednesday, 8 September 2021** at **7.00 pm** in **London Borough of Sutton Civic Offices, St Nicholas Way, Sutton SM1 1EA**

Asmat Hussain
Executive Director of Resources and
Monitoring Officer (Interim)
London Borough of Croydon
Bernard Weatherill House
8 Mint Walk, Croydon CR0 1EA

Jayde Watts
020 8726 6000 x52729
Jayde.Watts@croydon.gov.uk
www.croydon.gov.uk/meetings
Tuesday, 31 August 2021

AGENDA

Item No.	Item Title	Report Page nos.
1.	Agenda	3 - 40

This page is intentionally left blank



Published on: 27 August 2021

**For enquiries on this agenda please contact:
Andy Gemmell, Committee Services Officer
Committee.services@sutton.gov.uk**

This agenda is also available to view on:

www.croydon.gov.uk

www.merton.gov.uk

www.kingston.gov.uk

This agenda is available at
www.sutton.gov.uk

SOUTH LONDON WASTE PARTNERSHIP JOINT COMMITTEE AGENDA

A meeting of the SOUTH LONDON WASTE PARTNERSHIP JOINT COMMITTEE will be held at LONDON BOROUGH OF SUTTON CIVIC OFFICES, ST NICHOLAS WAY, SUTTON SM1 1EA on 8 September 2021 at 7.00 pm

Members of the Committee

London Borough of Croydon

Councillor Muhammad Ali
Councillor Patsy Cummings

Royal Borough of Kingston upon Thames

Councillor Tim Cobbett
Councillor John Sweeney
Substitutes: Councillors Stephanie Archer and Dave Ryder-Mills

London Borough of Merton

Councillor Tobin Byers – Cabinet Member for Finance
Councillor Natasha Irons – Cabinet Member for Local Environment and Green Spaces
Substitutes: Councillors Mark Allison and Martin Whelton

London Borough of Sutton

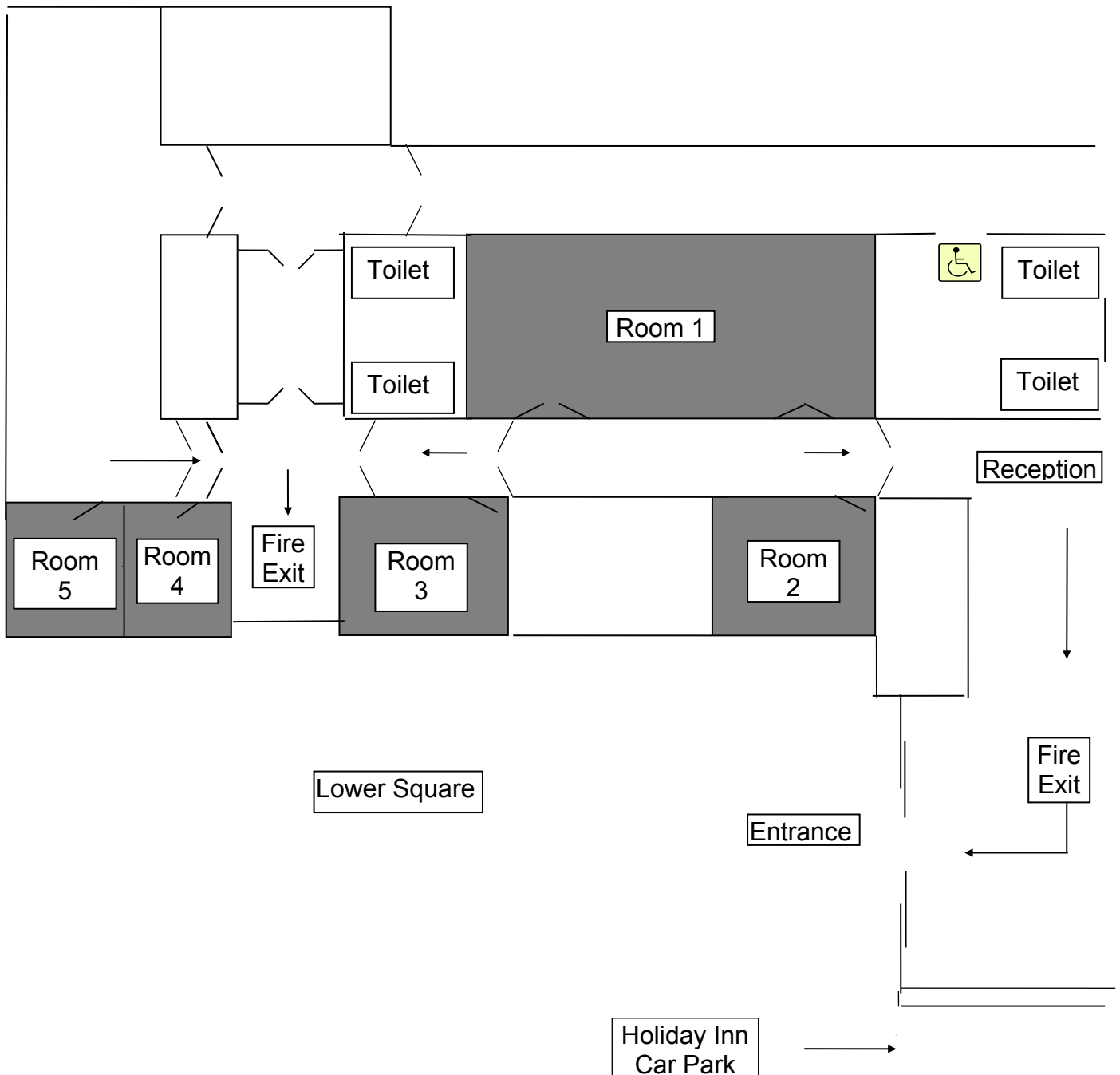
Councillor Manuel Abellan – Chair of the Environment and Sustainable Transport Committee
Councillor Ben Andrew – Vice-Chair of the Environment and Sustainable Transport Committee
Substitute: Councillor Hanna Zuchowska

CIVIC OFFICES, SUTTON GROUND FLOOR MEETING ROOMS

FIRE PRECAUTIONS

If there is a FIRE in the building the fire alarm will sound continuously. Leave the building immediately by the most direct route, either back through reception or the fire exit into Lower Square. Take your coat and any bags with you. Assemble in the car park in front of the Holiday Inn.

First Aid can be obtained from Civic Security in reception.



A G E N D A

1. **Welcome and Introductions**
2. **Apologies for Absence and Declarations of Interest**
3. **Minutes of the previous meeting** 1 - 10
 To approve as a correct record the minutes of the meeting held on 17 December 2020.
4. **Any Urgent Business**
 To consider any items which, in the view of the Chair, should be dealt with as a matter of urgency because of special circumstances (in accordance with S100B(4) of the Local Government Act 1972).
5. **Phase A and B Contract Management Report** 11 - 18
6. **South London Waste Partnership Budget Update Month 3 2021/22** 19 - 20
7. **Communications and stakeholder engagement – Phase A and Phase B contracts** 21 - 34
8. **Exclusion of the Press and Public**
 To exclude the public from the meeting under Section 100(A)(4) of the Local Government Act 1972 on the grounds that it is likely that exempt information, as defined in Part I of Schedule 12A to the Act, would be disclosed and the public interest in maintaining the exemption outweighs the public interest in disclosing the information.

This page is intentionally left blank

SOUTH LONDON WASTE PARTNERSHIP JOINT COMMITTEE**THURSDAY 17 DECEMBER 2020****6:30 – 21:10****London Borough of Croydon**

Councillor Nina Degradis – Deputy Cabinet Member for Clean Green Croydon

Councillor Muhammad Ali – Cabinet Member for Sustainable Croydon

Royal Borough of Kingston upon Thames

Councillor Hillary Gander - Portfolio Holder for Environment & Sustainable Transport

Councillor Tim Cobbett – Deputy Leader and Portfolio Holder for Communities and Engagement

London Borough of Merton

Councillor Natasha Irons - Cabinet Member for Local Environment and Green Spaces

Councillor Tobin Byers – Cabinet Member for Finance

London Borough of Sutton

Councillor Manuel Abellan - Chair of the Environment & Neighbourhood Committee

Councillor Ben Andrew – Vice-Chair of the Environment & Neighbourhood Committee

* Absent

Councillor Hanna Zuchowska, London Borough of Sutton, attended as substitute.

Councillor Nick Matthey, London Borough of Sutton, also attended.

1. Apologies for absence and attendance of substitute members

Councillor Andrew sent his apologies and Councillor Hanna Zuchowska attend as his substitute.

2. Minutes**RESOLVED:** That the minutes of the previous meeting held on 9 September 2020 be confirmed and approved as the correct record.**Voting:** Unanimous**3. Declarations of interest**

There were no declarations of interest.

4. Contract Management Report A and B Q2**Appendix 1**

The Interim Strategic Partnership Manager presented the update report. There were no issues to report with Contract 1 (Waste transfer station bulking and haulage, operated by Viridor Waste Management Ltd.).

An update was provided for Contract 2 (Management of the Household Reuse and Recycling Centres, operated by Veolia). It was highlighted that the HRRC sites received 47% less green waste than would normally be expected by this point in the year. This was due to the sites being closed during April and May following government guidance to help slow the spread of coronavirus.

There were no performance issues to note in regards to food and garden waste within the Contract 3 services (Materials Recycling Services, Composting, and additional treatment services carried out by Viridor Waste Management Ltd.).

An update was provided on the Phase B Residual Waste treatment Contract, operated by Viridor South London Ltd. The Partnership delivered just over 108,000 tonnes of residual waste to the Beddington plant from 1 April 2020 - 30 September 2020, an increase of 7% for the same period last year. During Q1 and Q2 Viridor treated 100% of residual waste with none being sent to landfill in the face of unprecedented challenges arising this year. 4 exceedances of the VOC half-hourly average Emissions Limit Value (ELV) were reported during the April 2020 - September 2020 period, with Viridor attributing these to the variable nature of municipal waste.

It was noted that Viridor are forecasting an exceedance of the Environment Agency's Permit for the Beddington ERF which allows Viridor to treat 302,500 tonnes of waste per annum. This is attributed to the lack of the scheduled maintenance downtime that was due to take place in spring this year which is a similar issue faced by ERF sites across the country due to the coronavirus pandemic and a restriction on travel. Viridor consequently made an application to the EA for a dispensation, allowing a 15% increase to the amount of waste they are allowed to process in 2020. The Interim Strategic Partnership Manager updated the meeting that according to Viridor it was the EA who then advised Viridor to submit a formal permit variation requesting to permanently increase the maximum amount of waste that can be processed in a calendar year as opposed to applying for a one-year dispensation.

The Committee raised concerns regarding the Environmental Permit increase. In response to why Viridor were due to exceed their current permit limit, it was suggested to be likely in part due to the 7% increase in waste produced by Partner boroughs, as well as the issue that Viridor were unable to carry out maintenance due to Covid as specialist engineers were unable to travel to the UK due to travel restrictions. It is assumed that the EA decision to request that Viridor apply for a permanent dispensation to increase the permitted waste processed was in order to afford more flexibility in the future if further adjustments were deemed necessary. It was also noted that the SLWP could not speak on behalf of the Environment Agency.

The Committee wished to note some concerns about the proposed permanent permit variation and sought further discussions with the Environment Agency to seek reassurances on, as well as question, the change in the ERF's operations and the expected emissions that could arise from this request. It was noted that Members of the Committee had written to the Environment Agency seeking reassurances about how the issues of emissions and vehicle movements would be considered when determining the permit variation application. Given the concerns raised at the meeting, Members requested that officers set up a meeting with

17 December 2020

South London Waste Partnership Joint Committee

Environment Agency representatives to discuss these issues with them directly. The Committee also reiterated their request that Viridor be in attendance at future SLWP Committee meetings in order to directly answer questions from members and local residents.

In response to queries on the effect of the Covid lockdown tiers on the SLWP's waste management efficacy and the HRRCs, it was reiterated that there are no plans to fully close the HRRC sites again.

Councillor Nick Matthey from Sutton Council was permitted by the Chair and Committee members to attend the meeting, make a short statement and ask a question. Councillor Matthey raised concerns with the levels of Nitrous Oxide currently being emitted by the Beddington ERF and the likelihood of these increasing as a result of the EA's permit to allow the site to process up to 15% more waste.

The Interim Strategic Partnership Manager explained that the emissions levels limits are set by the Environmental Agency at a sufficiently safe level so that there is no negative impact to the local community and surrounding environment. Furthermore, the EA are responsible for regulating Viridor to ensure that they operate within those boundaries, on the occasions these levels are breached the EA are able to issue CCS scores that have both a financial and reputational impact and they have done so at the Beddington ERF. It was stressed that although the EA are proposing to allow an increase in capacity to process waste, it is not increasing the limits of permitted emissions.

Councillor Matthey also sought clarification on the apparent conflict between the 4 borough councils' aims to become carbon neutral alongside the use of a residual waste incinerator. The Interim Strategic Partnership Manager stressed the importance of reducing Carbon emissions as a global aim and not necessarily just localised to the South London area and that the carbon impact is not allocated to the treatment facility but instead to the waste producer. It was emphasised that the SLWP essentially has a choice of either landfilling waste, exporting to ERF sites elsewhere in the UK or Europe or treating waste through the Beddington ERF, which is judged to be a clean, safe and proximate solution. Continued emphasis will be placed on making sure that the amount of household waste produced is reduced and therefore reducing the need for it to go to the Beddington ERF site.

The Committee received several questions from members of the public which are outlined, alongside the Committee's responses, in **Annex 1**.

RESOLVED: To note the contents of the report.

Voting: Unanimous

5. Partnership Budget Update - Month 6**Appendix 2**

The head of Finance Operations and Resident Support provided an update on the SLWP's budget outturn position for month 6 (September). There is a forecasted £17,600 underspend with the major variances being the expected acceptance of the

SLWP staff resource review causing a £205,000 underspend and the Internal and External Advisors budget causing a £194,000 underspend.

The Committee did seek clarification on when the expected staffing structure will be achieved after the ongoing reviews have concluded and what the expected benefits will be from it. The head of Finance Operations and Resident Support explained that the Director role will be in place by the end of March 2021 which will then enable the recruitment of the final outstanding positions. It was explained that the new staffing structure would benefit from a more centralised knowledge base and a more holistic team approach rather than a divided structure by individual services.

RESOLVED: To note the contents of the report.

Voting: Unanimous

6. Partnership Budget 2021/22

Appendix 3

The head of Finance Operations and Resident Support presented the proposed Partnership draft forecast for the 2021/22 financial year. The proposed budget, if approved, delivers a saving of £28,290 (£7,073 per borough).

RESOLVED: To agree the proposed budget for the core activities of the Partnership.

Voting: Unanimous

7. Communications Update

Appendix 4

The Communications Advisor for the SLWP provided an update on communications and stakeholder engagement activities. The work surrounding the 'Recycle Week' initiative in September 2020 was reported to the Committee. A targeted social media advertising campaign was run using both the Partnership's own funds as well as from the London Waste and Recycling Board (LWARB) matched funding package. The campaign was judged to be particularly successful due to its return on investment, with an estimated cost of 1p per person 'reached' on social media. The London Repair Week 2020 used the Partnership's Borough's own organic social media content for promotion at no external cost to the respective Councils. Various communications campaigns surrounding the HRRC sites have been judged to be successful.

The Committee sought more in-depth information on the demographics and location of the people that were reached by the SLWP's social media campaign. The Communications Advisor explained that they are able to provide a further breakdown of the key data from the social media campaign and clarified that the 16-34 year old age group usually respond best to campaigns such as this one. Although, it was emphasised that the return of investment in terms of overall 'reach' is likely to diminish the more demographic/location-based targeting the advertisements are. The wider awareness campaigns required a similarly wide and generic approach.

The Communications Advisor explained that a Communications plan for 2021 was underway with Veolia to ensure that local residents were aware that the HRRC sites

17 December 2020

South London Waste Partnership Joint Committee

were back open again and Covid-secure as well as various campaigns with the aim of reducing waste and improving recycling rates within the four boroughs.

RESOLVED: To note the contents of the report.

Voting: Unanimous

8. Risk Report Q2

Appendix 5

The Interim Strategic Partnership Manager presented the report and updated the Committee on the primary risks facing the Partnership. The risks associated with the impact of Covid was brought forward to this report as well as with the consequential 7% increase in kerbside residual waste. Similarly to what was reported at the previous meeting the ongoing risk associated with Brexit was carried forward, with the increasing likelihood of a 'No-deal Brexit'. Work is ongoing with contractors to ensure that contingency plans are in place. The Interim Strategic Partnership Manager does not anticipate any forms of Brexit will prohibit the ability for the Partnership to safely dispose of residual, food and green waste. Ongoing challenges remain with regards to strategizing and formulating responses to the impact of Covid on overall waste management.

RESOLVED: To note the contents of the report.

Voting: Unanimous

9. Exclusion of the Press and Public

RESOLVED: that the Press and Public be excluded from the meeting temporarily on the basis that exempt information as defined in paragraph 3 of Part 1 of Schedule 12A to the Local Government Act 1972 would be disclosed and the public interest in maintaining the exemption outweighs the public interest in disclosing the information.

Voting: Unanimous

10. Contracts 1 and 3 Reprourement

Appendix 6

RESOLVED: To note the progress to date on reprocurring elements of the Phase A Contracts 1 and 3 and endorse the sourcing strategy set out in paragraph 3 of this report.

Voting: Unanimous

11. Urgent items authorised by the Chair

There were no urgent items authorised by the Chair. The meeting finished at 21:10.

Signed.....Date.....
Chair

Annex 1

Questions	Responses
<p>Stephen Hart</p> <p>Living with a global pandemic which affects the human respiratory system and having a home in the shadow of the incinerator makes for a challenging mix. This becomes more pronounced when the operator is unable to meet even the low standards set by the toothless EA. Viridor recently published its full November emissions, with yet another breach (SO₂), so a total of three in November, in addition to previous months where they continually flout standards.</p> <p>What is the maximum number of breaches SLWP is happy to ignore before addressing the issue? They are building up every month. Further, when will any of the committee's Councillors stand up for their constituents and challenge their contractor to clean up their act? I am of the opinion that failure to meet legal emissions should result in a period of closure. Repeated violations should mean permanent closure. This would be an incentive for the operator and Councillors to ensure responsibility and safety for residents across London.</p>	<p>It is incorrect to describe the emissions limits set for the Beddington Energy Recovery Facility (ERF) by the Environment Agency as 'low'. They are incredibly strict. This is why, for example, the total emissions of dioxins from all energy from waste plants in the UK in 2017 was 10 times less than those from bonfire night. And it's why in 2017 domestic wood burning stoves produced 570 times more particulate emissions than all the UK's energy from waste plants combined.</p> <p>We are confident that the Beddington ERF is operating safely. Any exceedances of the permit limits must be reported to the Environment Agency (EA) by Viridor immediately. It is the EA who are responsible for regulating the facility and they would force it to suspend operations if they felt at any point it was not operating safely.</p> <p>In November 2020, there were two exceedances of the half hourly average for Sulphur Dioxide (SO₂) and one exceedance of the half hourly average for Volatile Organic Compounds (VOC). On all three occasions, the exceedances were momentary spikes: the issues were quickly identified and corrective action taken. This meant the daily average readings remained well within permit requirements.</p> <p>It is important to put these momentary 30-minute average exceedances into context. Between January and November 2020, the Beddington ERF has been 99.96% compliant in the case of VOCs and 99.99% compliant in the case of SO₂. Of course the SLWP demands the highest standards from our commercial partners. We want the ERF to be 100% compliant, and that is why we have formally requested a Rectification Plan from Viridor.</p> <p>Any exceedance of the emissions limits is taken seriously by Viridor, the EA and SLWP. The EA can, and usually do, levy financial penalties in the form of Compliance Classification Scheme (CCS) scores, which provide Viridor with a clear financial incentive to ensure permit conditions are met.</p>

17 December 2020

South London Waste Partnership Joint Committee

<p>Gina Mudge</p> <p>How many tonnes of Carbon Dioxide are emitted by the Beddington ERF (incinerator) each month into the atmosphere?</p> <p>How many megawatt hours of electricity are exported each month from the ERF (incinerator)?</p>	<p>Thanks to the Beddington ERF, 100% of the SLWP boroughs' residual household waste was diverted away from landfill. Treating waste in energy recovery facilities delivers significant carbon savings over landfill.</p> <p>The Beddington ERF emitted an estimated 135,898 tonnes of fossil-derived carbon emissions last year; it is variable because it depends on the composition of the waste being sent to the facility. This figure is apportioned to each of the four SLWP boroughs based on how much residual waste they sent to the ERF. In the case of Sutton, for example, their apportionment would be an estimated 18,075 tonnes.</p> <p>A Carbon Working Group has been established to explore what can be done to reduce the carbon impact of our waste treatment activities and contribute to the boroughs' ambitions of becoming carbon neutral. Residents have a really important role to play: they can help reduce the carbon impact of the ERF by reducing plastic waste and recycling as much of their unavoidable plastic waste as possible.</p> <p>The Beddington ERF produces 26MW of electricity each year – enough to power the facility itself plus 55,000 homes.</p>
---	---

Jim Duffy

Can I ask what was Viridor's response to our request for an apology for the July 2019 fire?

Unfortunately the recent waste policy consultation, to which I contributed, was not discussed at the last Sutton full council meeting. I recommended that, in order to maximise recycling rates and reduce the incineration of some toxic waste materials, that kerbside waste collections be extended eg to electronics, batteries and metals. Does the committee agree this would help reduce toxin and carbon emissions? And perhaps reduce the risk of fire from batteries included in domestic waste? I also submitted that non-recyclable plastic should be landfilled instead of burnt. Plastic is inert and does not emit methane when landfilled, unlike organic matter. The plastic could be mined in the future when the technology exists to recycle the plastic. Does the committee agree this action would significantly reduce carbon dioxide, furan and dioxin emissions from the incinerator which burns about fifty percent plastic? I applaud Chair, Hilary Gander's statement in July that plastic shouldn't be incinerated.

If Viridor's request to forgo annual maintenance outages is permitted, can the committee say what effect this will have on air quality, eg if filters are not routinely replaced will clogging cause extra pollution emissions?

The issue of the fire at the Beddington Waste Transfer Station in July 2019 was discussed at great length at the July 2020 meeting of this committee. The minutes for that meeting can be found [here](#). Viridor has reiterated that the fire was an extremely regrettable and unfortunate incident.

Reducing the risk of waste transfer station fires is a top priority for the SLWP boroughs and Viridor. All our key collection service information materials make it clear to residents that electronic items and batteries should not be placed in general waste bins.

The collections contract we hold with Veolia is not in the remit of the SLWP Joint Committee, but it should be noted that:

Household batteries are already collected from the kerbside from most properties across the SLWP region, as is metal packaging such as tins, cans, aerosols and tin foil. Electronic items and larger metal items can be taken by residents for free to their local Household Reuse and Recycling Centre. We welcome the fact that from January 2021, large electronic retailers will be obliged to take back waste electrical and electronic equipment (WEEE) in-store on an old-for-new basis. All four boroughs also offer a kerbside bulky waste collection service.

We are aware that the pros and cons of landfilling plastics is something that is being explored at a national policy level. For now, our view is that the priority should be reducing plastic waste rather than landfilling it, which feels like a backward step. The more plastic waste we can take out of the residual waste stream the better. It is by far the most effective way we can reduce the carbon impact of our waste treatment activities.

We need residents to help; by reducing their plastic waste and recycling or reusing as much of their unavoidable plastic waste as possible. We also need the government to help; by introducing legislation that incentivises manufacturers and retailers to reduce their reliance on plastic and that stimulates demand for recovered plastics amongst UK packaging manufacturers. This would allow us to collect and process a wider range of plastic materials. Residents of the SLWP region are reminded that they can already recycle plastic bottles, pots, tubs and trays using their recycling collection service.

Viridor is upgrading the ERF to enable it to operate within its permit limits with fewer planned outages. There will be no impact on air quality because the Environment Agency will continue to regulate the facility against its existing permit.

17 December 2020

South London Waste Partnership Joint Committee

<p>Verity Thomson</p> <p>We're disappointed that Viridor is seeking a 15 percent increase in waste for incineration to 347,422 tonnes per year as it cannot perform its annual planned maintenance outage. This step is taking things in entirely the wrong direction regarding climate change. Can the committee please refuse this request?</p>	<p>This has been an extraordinary and challenging year: COVID-19 restrictions meant that Viridor's planned spring maintenance shutdown period for the Beddington ERF had to be deferred to 2021, resulting in more waste than forecast being processed.</p> <p>Having access to a secure, reliable and local waste treatment facility was a key factor in our ability to keep waste collection services running without significant disruption during the spring lockdown.</p> <p>The decision about whether or not to allow the application to vary the permit sits with the Environment Agency, not the SLWP boroughs. The Members of the SLWP Joint Committee have written to the EA seeking reassurances that issues around emissions and traffic movements will be carefully considered when determining the application.</p>
<p>David Tchilingirian</p> <p>A proposal to levy an incineration tax is currently being considered as part of a government carbon tax bill. This would help local authorities take serious steps to make good their calls for a 'climate emergency'. Would the committee support a carbon tax on incineration to encourage a reduction in CO2 emissions and increase in recycling, if not why?</p>	<p>The government has stated that it would consider an 'incinerator tax' in the future if long-term waste ambitions to maximise the amount of waste sent for recycling are not met. The SLWP boroughs are proof that sending waste for energy recovery does not need to hamper efforts to reduce, reuse and recycle. The SLWP average recycling rate has increased by 7 percentage points over the last three years, one of the highest in the country.</p> <p>The SLWP boroughs believe the government should be prioritising legislation that helps reduce the volume of residual waste councils collect from households, rather than penalising the safest, most environmentally-sustainable option available to those councils for dealing with that waste.</p>

This page is intentionally left blank



Report to: South London Waste Partnership (SLWP) Joint Waste Committee
Date: 8 September 2021
Author(s): Andrea Keys, Interim Strategic Manager
Chair: Councillor Manuel Abellan, Sutton Council
Report title: Phase A and B Contract Management Report

Summary

This report provides Joint Waste Committee with an update on the performance of the Phase A and Phase B Contracts procured and managed by the South London Waste Partnership:

- i. Contract 1: Receipt and Transport of Food, Green and mixed recycling.
- ii. Contract 2: HRRC services - HRRC site management and material recycling
- iii. Contract 3: Treatment of food and green
- iv. Phase B: The 2012 Residual Waste Treatment Contract (the ERF Contract)

This report provides performance data for the period 1 April 2021 to 30 June 2021.

Recommendations

1. To note the report.
2. To comment on any aspects of the performance of the Partnership's Phase A and B contracts.

Background Documents

Contract Performance Monitoring updates have been presented to the Joint Waste Committee since 22 July 2010. The most recent reports were presented at the meeting in June 2021 by the Interim Strategic Manager, Andrea Keys.

BACKGROUND

- 1.1. **Phase A: Contract 1** is operated by Viridor Waste Management Ltd and includes the receipt, bulking and haulage of green, food and recycling until 31 August 2022. (The disposal element of this contract ceased on 3 March 2019 and since 4 March 2019 the residual waste has been managed through the Residual Waste Treatment Contract operated by Viridor South London Ltd (also referred to as the Phase B ERF Contract)).
- 1.2. The London Boroughs of Croydon, Sutton and Merton directly deliver kerbside-collected garden and food waste into the Beddington site, operated by Viridor.
- 1.3. The Royal Borough of Kingston (RBK) directly delivers kerbside-collected residual, recyclates, garden waste and food waste into the Kingston Villiers Road Waste Transfer Station (WTS). The WTS is divided into three parts and is operated by Viridor South London under the Residual waste treatment contract (see 1.6 below), by Veolia under the HRRC contract (1.4), and also by Viridor WML under this Contract 1.
- 1.4. **Phase A: Contract 2**, the HRRC service is operated by Veolia (ES) (UK) Ltd. The contract commenced on 1 October 2015 and includes the management of the 6 Partnership HRRC sites in addition to the marketing of recyclates collected at each of the sites.
- 1.5. **Phase A: Contract 3** is operated by Viridor Waste Management Ltd and includes the composting of garden and food waste until August 2022. The services provided under Contract 1 receive and bulk this material and then provide onward transport to the composting facilities in this Contract 3.
- 1.6. **Phase B: Residual Waste Treatment Contract** - Viridor South London Limited ('Viridor SL') was formally awarded a contract for the treatment and disposal of residual waste in November 2012. The Contract involves Viridor designing, building and operating an Energy Recovery Facility (ERF) which will remain in its ownership and through which it will dispose of suitable and permitted municipal residual waste arising in the South London Waste Partnership area.

PERFORMANCE DETAIL

- 1.7. **Contract 1: Waste transfer station bulking and haulage (Viridor Waste Management Limited)**
- 1.8. Contract 1 includes waste transfer station operations and bulk haulage services only. The Contract is operating effectively and there are no issues to report.
2. **Contract 2: Management of the Household Reuse and Recycling Centres (Veolia (ES) (UK) Ltd)**

- 2.1. **HRRC Contract Performance Review:** The scope of the HRRC services can be summarised in three parts: the general management of the sites including staffing, plant, equipment, and site layouts; the transportation of materials; and the recycling, treatment, and/or disposal of waste collected at the HRRC sites (excluding garden and residual waste).
- 2.2. The contract specification focuses on three key performance categories; site user experience, health and safety, and material recycling. The report reviews the site user experience and recycling performance of the contract for the period April 2021 to June 2021.
- 2.3. **HRRC COVID Measures Recap:** On 24 March 2020 all six SLWP HRRC sites, along with all other London borough HRRC sites, were closed following government advice and resultant legislation in relation to the COVID19 outbreak. Following the remobilisation project the services reopened on 13 May 2020 and have remained under special COVID measures. These measures included; restrictions on customer numbers in narrow access areas within the sites (such as the gantry steps and raised walkways), enhanced hygiene measures (washing down of handrails and contact points), social distancing between staff and customers (staff cannot offer assistance with carrying waste), measures to control number of customers on site, and additional site signage.
- 2.4. **Roadmap** - Since March 2020 the Partner Boroughs have moved through a number of government-led 'risk classification and control mechanisms' including a full lockdown, the '5 step social distancing guide', the '3 tier' system, and the 'roadmap out of lockdown'. The guidance throughout this period has required varying special operational measures to remain in place. An HRRC roadmap tracking the Government's has been agreed with the contractor, following which the number of parking bays available for public were increased.
- 2.5. **HRRC COVID measures Update** - On the 19 July 2021 all parking spaces were reopened (increasing capacity at some sites by up to 25%) and sites assumed the pre-Covid operational configurations. Some special measures have continued, including the enhanced hygiene measures (washing down of handrails and contact points), social distancing between staff and customers (staff cannot offer assistance with carrying waste), and the pre-booking systems which will remain in place in Kingston, Merton and Sutton.
- 2.6. **Site user experience:** Veolia started customer satisfaction surveys in July 2016 to monitor site user experience. Customer satisfaction questionnaires are undertaken for two weeks at the six sites in turn for each round. Customer Satisfaction surveys were suspended on 24 March 2020 when the sites were closed, however, over 800 surveys were still undertaken in the reporting year 2020/21 when the relevant restrictions permitted. The results of the surveys show that the sites continue to achieve in excess of 80% in satisfaction levels.

- 2.7. **Recycling Performance analysis** – Each month the SLWP looks at materials recycled, recycling markets, and the impact of the wider SLWP recycling services, in order to better understand HRRC recycling rates and assess the Contractor’s performance.
- 2.8. Table 2a of Appendix A details the recycling performance by site and by month (please note the year end performance figure is based on the raw tonnage data, not an average of the recycling performance per month). At the end of quarter 1 the combined performance at the SLWP HRRC sites was 67%, this is a 1% drop against the quarter 1 position in 2020/21.
- 2.9. Table 2b in Appendix A uses data from the last three years in order to compare performance in 2021/22 with the previous two years. The green bars show the recycling performance for the current Contract Year 2021/22. The yellow and blue bars show recycling performance for the same period in the previous two years. The dotted line and accompanying white numbers in this graph show last year’s end-of-year recycling performance for each site. The table shows that the recycling performance at the Corydon sites has exceeded the previous quarter one period and is starting to move back towards pre-covid performance levels. The three sites with booking systems (Garth Road, Kimpton Park Way and Villiers Road) are also starting to see performance return to the pre-covid levels.
- 2.10. **Recycling Performance** - Contract performance analysis typically compares the current year with the immediately preceding year, drilling down into detail around the key materials. However, due to the restrictions and operational measures in place in quarter one 2020 the performance is not comparative. Therefore, the analysis undertakes a comparison of our current quarter one performance against the data from the same quarter one period in 2019 when the sites were fully operational. This analysis shows that the total tonnage processed at the sites in this reporting quarter is 27% lower than 2019 quarter one, with recycled tonnes down 25% and the amount of residual waste received at the sites down by 19%. As above in 2.9, this appears to suggest as the restrictions are lifted, the recycling performance at the sites is starting to move back into line with the site performance prior to the start of the pandemic on the 24th March 2020.
- 3. Contract 3 – Materials Recycling Services, Composting, and additional treatment services (Viridor Waste Management Limited)**
- 3.1. Garden waste is delivered to the Viridor Beddington Waste Transfer facility where it is bulked and hauled off-site for treatment in a number of third party facilities.
- 3.2. The garden waste is processed in order to produce a BSI PAS100-compliant compost product. Garden waste tonnage data for the

reporting period on combined kerbside and HRRC tonnes can be found in Appendix A, in chart 3b.

3.3. Food waste is delivered to either the Beddington transfer station facility or the Villiers Road transfer station facility. From both sites the food waste is transferred by Viridor to the Severn Trent Trumps Farm Anaerobic Digestion (AD) facility located in Surrey. The Severn Trent facility produces a BSI PAS 110 compost product. Food waste tonnage data for the reporting period can be found in Appendix A, in chart 3b.

3.4. There are no performance issues with the food and garden waste processed through the Contract 3 service.

4. **Phase B – Residual Waste treatment Contract (Viridor South London Limited)**

4.1. Viridor South London has been delivering the services under the Residual Waste Treatment contract since 4 March 2019.

4.2. In the reporting period 1 April 2021-30 June 2021, the Partnership delivered just over 53,000 tonnes of residual waste to Beddington, this was a marginal drop in waste when the data is compared to the same period last year. Please see Appendix A table 1a for further detail.

4.3. **Landfill Diversion** - Viridor SL has an annual landfill diversion target, and for 2021/22 this target is 91.34%. In the reporting period 1 April 2021-30 June 2021, 91% of the residual waste delivered by SLWP partner boroughs was treated via ERF. The 9% of residual waste sent to landfill is in most part due to the planned maintenance shut-down during the quarter one period. It's also important to note that Kingston delivers their waste into a local waste transfer station for onward bulk transfer and so during ERF downtime Kingston's waste is first to be transferred to alternative outlets. Please see Appendix A table 1b for further diversion data.

4.4. **Emissions** – The emissions from the Beddington ERF are sampled every 10 seconds, 7 days a week, 365 days a year. The results are fed back to the ERF Control Room, so any potential issues are known about immediately and appropriate action can be taken. The results from the continuous emissions monitoring systems (CEMS) are reported to the Environment Agency (EA - the regulator for the facility) and uploaded by Viridor to a publicly-accessible website (www.beddingonterf.info). The EA sets limits (based on 10-minute, 30-minute, and daily averages) for different types of emissions. The Beddington ERF has been designed to operate at the very highest international standards and, under normal operating conditions, emissions are well below the limits set by the EA.

4.5. **Sulphur dioxide (SO₂)** – As reported in the June 2021 Joint Waste committee update, there was an exceedance of the SO₂ 30-minute average in April, and on 2 May there were a further two 30-minute average exceedances of SO₂. The cause of the exceedances is likely to be waste with a higher than normal sulphur content (for example, plasterboard). The issues were identified and appropriate action was

taken. In all cases, the facility remained within its Daily Average limit for SO₂. Viridor has reported these exceedances to the EA.

- 4.6. There have been no further exceedances during the reporting period.
- 4.7. It is important to note that the facility must operate in accordance with its Environmental Permit which is issued and regulated by the Environment Agency (EA). The site cannot operate without its permit from the EA and if the site is not compliant with its permit, the EA has the power to serve both enforcement and suspension notices. The SLWP will continue to work closely with Viridor and the EA to ensure the Beddington ERF is operating safely.

5. IMPACTS AND IMPLICATIONS

- 5.1. LEGAL -There are no legal considerations arising directly out of the recommendation in this report.
- 5.2. FINANCE - There are no financial considerations arising directly out of the recommendation in this report.

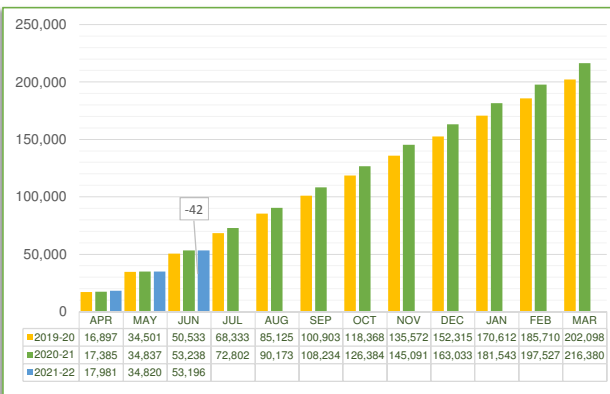
6. Appendices

- 6.1. Appendix A provides data on the performance of the Phase A and B contracts for the reporting period 1 April 2021-30 June 2021.

SECTION 1: CONTRACT 1 - RESIDUAL WASTE DISPOSAL

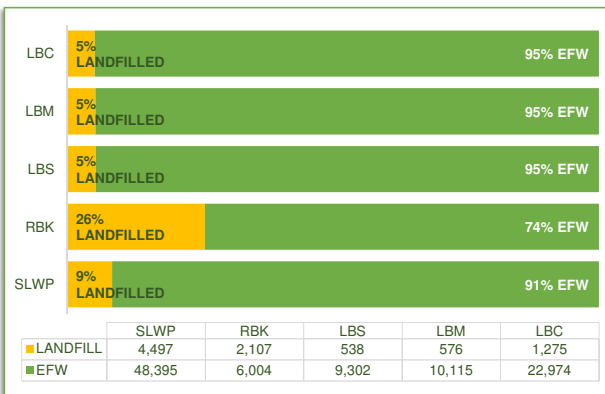
1a - TOTAL RESIDUAL WASTE GROWTH

CUMULATIVE RESIDUAL WASTE - CURRENT YEAR AGAINST 2 PREVIOUS YEARS



1b - DIVERSION FROM LANDFILL

TOTAL TONNES AND % OF WASTE SENT TO ENERGY RECOVERY



SECTION 2: HRRC RECYCLING PERFORMANCE

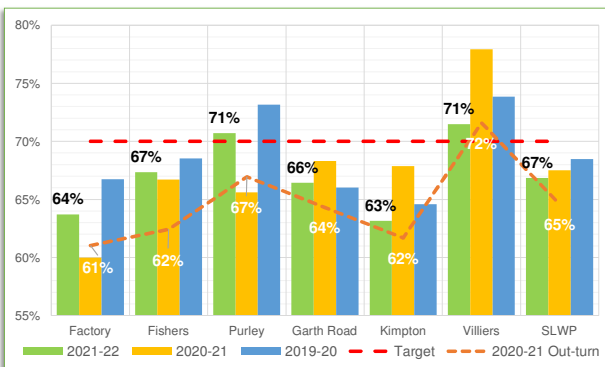
2a: HRRC RECYCLING PERFORMANCE

MONTHLY PERFORMANCE FOR EACH SITE AND SLWP AVERAGE

	FACTORY LANE	FISHERS FARM	PURLEY OAKS	GARTH ROAD	KIMPTON PARK WAY	VILLIERS ROAD	SLWP
APR	63%	67%	70%	67%	63%	71%	67%
MAY	63%	64%	68%	64%	63%	71%	65%
JUN	65%	71%	74%	67%	64%	72%	68%
JUL	-	-	-	-	-	-	-
AUG	-	-	-	-	-	-	-
SEP	-	-	-	-	-	-	-
OCT	-	-	-	-	-	-	-
NOV	-	-	-	-	-	-	-
DEC	-	-	-	-	-	-	-
JAN	-	-	-	-	-	-	-
FEB	-	-	-	-	-	-	-
MAR	-	-	-	-	-	-	-
YTD	64%	67%	71%	66%	63%	71%	67%

2b: YEAR TO DATE RECYCLING PERFORMANCE

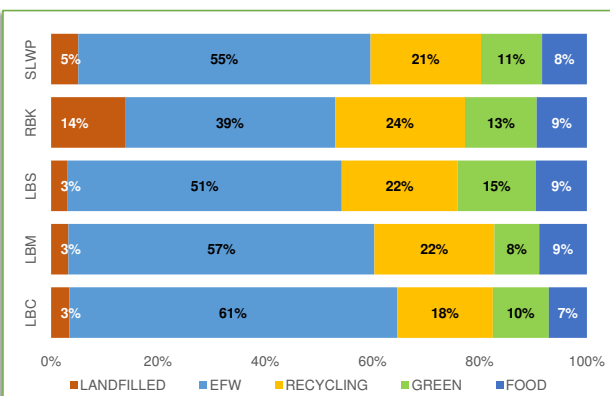
PERFORMANCE COMPARED TO LAST 2 YEARS



SECTION 3: WASTE ARISING

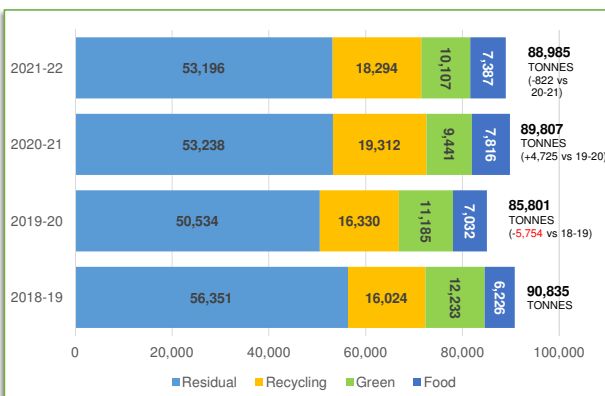
3a: WASTE ARISING BY BOROUGH (INC. NON HOUSEHOLD WASTE)

INDIVIDUAL WASTE STREAMS AS % OF TOTAL WASTE (APRIL - JUNE'21)



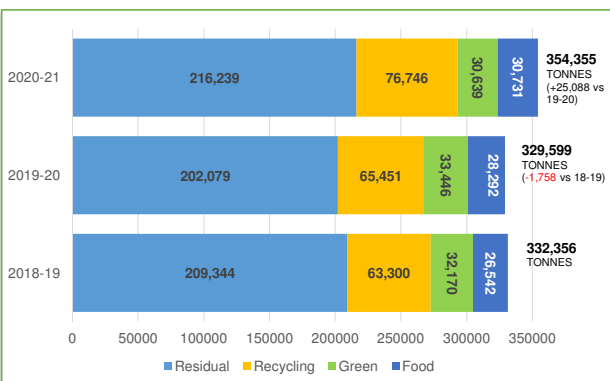
3b: TOTAL WASTE ARISING - YTD (INC. NON HOUSEHOLD WASTE)

QUARTER 1 (APRIL - JUNE'21) 2020-21 AGAINST LAST 3 YEARS



3c: TOTAL ANNUAL PARTNERSHIP WASTE ARISING (INC. NON HOUSEHOLD WASTE)

TOTAL SLWP TONNAGE BY WASTE STREAM - LAST 3 YEARS



This page is intentionally left blank



Report to: South London Waste Partnership (SLWP) Joint Waste Committee
Date: 8 September 2021
Author(s): Michael Mackie, Finance Lead
Chair: Councillor Manuel Abellan
Report title: South London Waste Partnership Budget Update Month 3 2021/22

Summary

This paper provides an update on the Partnership's budget position for month 3 (June) of the 2021/22 financial year and the projected outturn for the financial year.

1. Background

- 1.1 The Partnership sets its budget in December for the forthcoming financial year.
- 1.2 The budget is monitored monthly to allow the budgets to be flexed where appropriate in order to respond to any budget pressures.

2. Financial Position 2021/22

- 2.1 The table below refers to the Partnership's budget position for its Strategic Management activities for month 3 (June) of the 2021/22 financial year. It relates to expenditure in the following areas; procurement, project management, administration, contract management and communications.

Item	Approved Budget £	Actuals & Commitment s £	Forecast Outturn £	Variance £
<i>Internal and External Advisors and Accounting</i>	149,500	19,895	235,750	86,250
<i>SLWP Staff Resources and communications management</i>	599,100	87,000	498,170	(100,930)
<i>Document and Data Management</i>	19,200	0	19,200	0
<i>Communications</i>	26,500	0	26,500	0

TOTAL	794,300	106,895	779,620	(14,680)
COST PER BOROUGH	198,575	26,724	194,9050	(3,670)

2.2 The Partnership’s budget for Strategic Management activities at month 3 forecasts a small underspend of £14,680 (£3,670 per borough) for the year. The major variances are as follows:

2.3 Staff resources and communications management is forecasting a £101k underspend. This is the result of several posts remaining vacant whilst the staffing structure is reviewed. Following the review of the structure a consultation with the current staff will need to take place before any proposed structure is finalised and the forecast assumes all posts will be in place from 1 January 2022.

2.4 The Internal and External Advisors budget is forecasting an £86k overspend. This is due to advisors being commissioned to cover some of the activities of the vacant posts.

3. Recommendations:

3.1 To note the content of this report.

4. Impacts and Implications:

Finance

4.1 Contained within report.



PART A REPORT

Report to: South London Waste Partnership (SLWP) Joint Committee
Date: 8th September 2021
Author(s): John Haynes, Communications Advisor
Chair: Councillor Manuel Abellan
Report title: Communications and stakeholder engagement – Phase A and Phase B contracts

Summary

This paper provides an update to Members of the South London Waste Partnership Joint Committee on communications and stakeholder engagement activities relating to the Partnership's Phase A (transport & residual waste management, HRRC services and marketing of recyclates) and Phase B (residual waste treatment) contracts.

This report focuses on activity that has taken place between June and August 2021.

Recommendations

The Committee is asked to:

- Note the contents of this report and comment on any aspects of communications and engagement activities relating to the Phase A and Phase B contracts.

1. Recycle Week 2021

- 1.1 WRAP has confirmed that this year's Recycle Week will run 20-26 September 2021. The theme will be how recycling can help fight climate change and it will be delivered under headline: 'Step it up this Recycle Week'.



- 1.2 The SLWP boroughs will once again celebrate Recycle Week, using the promotional materials provided by WRAP and working in partnership and with our commercial contractors to maximise the impact of our efforts.
- 1.3 As with last year, the focal point will be a high-profile social media advertising campaign. WRAP is creating a suite of eye-catching, static and animated social media campaign creatives which are being localised for our region by ReLondon.
- 1.4 ReLondon has commissioned a specialist media buying agency to plan and deliver a targeted social media campaign using the London-ised campaign creatives. The South London Waste Partnership has been successful in securing £4,000 of funding from ReLondon to pay for the advertising campaign to be delivered across the SLWP region. ReLondon will also be paying the social media agency fees, meaning that 100% of our £4,000 budget can be spent on advertising.
- 1.5 To support the social media advertising campaign, the Veolia SLWP Communications Team also plan to hold pop-up roadshow events in each of the four SLWP town centres during Recycle Week. This will provide an opportunity to engage directly with residents and help them understand the link between the way they manage their household waste and climate change.
- 1.6 The localised social media assets will be provided to the borough communications teams for use on council-controlled social media, digital and print communication channels.

2. Food Wave

- 2.1 The SLWP boroughs have jointly expressed an interest in being involved in ReLondon's Food Wave campaign.
- 2.2 Food Wave is a pan-European project that aims to engage young people with the topic of food and climate change, educating and inspiring them to become activists and influencers amongst their peer group and make changes to their relationship with food.
- 2.3 In London, the programme will focus on activities and workshops with small groups of disadvantaged young people, including farm visits,

discussions and cookery classes supported by educational content about the impact of food and food waste on climate change.

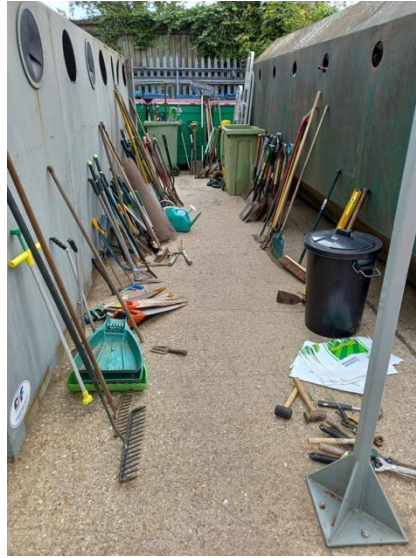
- 2.4 The SLWP is in discussion with ReLondon about how the boroughs could support the successful delivery of the programme.

3. PHASE A BACKGROUND

- 3.1 The Phase A contracts encompass transport & residual waste management, HRRC services and marketing of recyclates.
- 3.2 From a communications and stakeholder engagement perspective, the elements of the Phase A contracts that are of most significance are:
- the management of the six Household Reuse, and Recycling Centres (HRRCs), and
 - the landfill operations at Beddington.

4. HOUSEHOLD REUSE AND RECYCLING CENTRES (HRRCs)

- 4.1 Site user customer satisfaction surveys continue to take place on a rolling basis across the sites. The findings are reported back to this Committee in the Phase A & B Contract Management Report and are also published on the SLWP website.
- 4.2 The SLWP Communications Advisor continues to support the boroughs and Veolia in ensuring that residents are aware of the Covid-secure arrangements in place at the six HRRC sites and that suitable temporary signage is in place to support appropriate use of the sites. These arrangements are working well with the sites operating smoothly.
- 4.3 The SLWP Communications Advisor provided support to Sutton Council in introducing a fair usage policy and charging for rubble waste at the Kimpton Park Way HRRC. A comprehensive communications programme, including press releases, updated online booking form, social media messages and site signage, was devised and delivered with the support of Veolia. The changes took effect from mid-July 2021.
- 4.4 Veolia and Merton Council have been working together during June, July and August to support the Hillcross Primary School Gardening Club. A joint press release was issued and social media messages shared encouraging local residents to donate their unwanted gardening tools to the school by leaving them at a special collection point at the Garth Road HRRC. The initiative has been a success with significant volumes of gardening tools being brought to the site (see photo below).



5. BEDDINGTON LANDFILL OPERATIONS AND RESTORATION

- 5.1 This contract is operated by Viridor on behalf of the Partnership.
- 5.2 The focus of communications and engagement activities has been two-fold:
- Educating local residents and key stakeholders about the landfill operations at Beddington – i.e. how it has provided vital waste disposal capacity for hundreds of thousands of local households and businesses and how the site is being managed in order to minimise any negative environmental impacts;
 - Providing information on how the 120-hectare Beddington Farmlands site (which incorporates the landfill) is being restored into a rich patchwork of habitats for wildlife with public access.
- 5.3 Viridor are preparing the latest 'Beddington Farmlands Snapshot' to update on progress with the restoration of the old landfill site. This will include:
- Work on the meadowland, visible from the southern bird hides, to remove fencing and start mowing
 - Work to ensure the anti-predation fencing that was installed in the spring is being maintained effectively
 - Progress on arrangements to demobilise the ERF construction compound
 - The continued management of the historic sludge lagoons to the north and south of the site to maintain these habitats for nesting lapwing
 - Excavation of the phase 3 restoration area down to the baseline layer, ahead of creating scrapes and islets.

6. PHASE B BACKGROUND

- 6.1 The Phase B contract (residual waste treatment) was awarded to Viridor in 2012. In order to fulfill the contract, Viridor have constructed a £205m state-of-the-art Energy Recovery Facility in Beddington. Household waste from the four Partner boroughs that has not been sorted by residents for recycling is treated at the facility and used to generate electricity.
- 6.2 The SLWP Communications Advisor continues to work closely with Viridor to:
- Ensure Viridor are meeting their contractual requirements with regards to communications and stakeholder engagement around the construction and operation of the Beddington ERF
 - Ensure local people understand why it is we need an ERF and provide reassurance around the safety of modern, well-run facilities such as this
 - Ensure the Partnership understands the views of local people with regards to waste treatment and ERF technologies in particular.

7. BEDDINGTON ERF COMMUNICATIONS AND STAKEHOLDER ENGAGEMENT

- 7.1 The focus in recent months has been on measuring, managing and communicating the carbon impact of the Partnership's residual waste treatment activities.
- 7.2 At the June 2021 meeting of the SLWP Joint Committee, Members were presented with Viridor's Carbon Management Plan for the residual waste treatment contract. The SLWP has since held a Carbon Workshop with Members of the Sutton Administration Group. A workshop had also been scheduled with the Sutton Opposition Group, but had to be re-arranged.
- 7.3 The SLWP / Viridor Carbon Steering Group met in July. From a communications and engagement perspective, it was agreed that the immediate priority was to develop a carbon section on the Beddington ERF virtual visitor centre (www.beddingtonerf.info). It was also agreed that a three-year behaviour change strategy was required to support efforts to improve the carbon literacy of residents in relation to residual waste treatment and the difference we can all make by keeping plastic items out of the residual waste stream. The SLWP Communications Advisor will be working with Viridor to progress these two points.

- 7.4 In late May 2021, Viridor announced ambitious plans for it to become a carbon net-zero company by 2040 and net-negative by 2045. Viridor will achieve this by rolling out carbon capture technology across its fleet of energy from waste facilities - starting with the largest in Runcorn where they plan to install the technology by 2026.
- 7.5 Viridor hosted a customer roundtable event in July, where the SLWP congratulated Viridor on their ambitious carbon reduction programme; expressed a desire for the Beddington ERF to be an early adopter for any available technology; and asked Viridor to consider how carbon reduction initiatives delivered at a national level could benefit contracts at a local level.
- 7.7 Viridor will use Heritage Open Days (10-19 September 2021) as an opportunity to raise awareness of the Beddington Virtual Visitor Centre. A social media campaign will be delivered encouraging local residents to take a self-guided virtual tour, using the recently-uploaded videos to explain how waste is turned into energy.
- 7.6 Viridor continues to upload Emissions Monitoring Reports to the Beddington ERF Virtual Visitor Centre (www.beddingtonerf.info) twice per month.

8. Legal impacts and implications

- 8.1 None

9. Communications

- 9.1 This report has been drafted by the Partnership's Communications Advisor, who works closely with the four SLWP boroughs and the partnership's commercial partners to ensure communications and engagements activities support the themes agreed in the SLWP Communications Strategy 2020-2022.

10. Recommendations

- 10.1 The Committee is asked to:
- Note the contents of this report and comment on any aspects of communications and engagement activities relating to the Phase A and Phase B contracts.



PART A REPORT

Report to: South London Waste Partnership (SLWP) Joint Committee
Date: 8th September 2021
Author(s): John Haynes, Communications Advisor
Chair: Councillor Manuel Abellan
Report title: Communications and stakeholder engagement – Phase A and Phase B contracts

Summary

This paper provides an update to Members of the South London Waste Partnership Joint Committee on communications and stakeholder engagement activities relating to the Partnership's Phase A (transport & residual waste management, HRRC services and marketing of recyclates) and Phase B (residual waste treatment) contracts.

This report focuses on activity that has taken place between June and August 2021.

Recommendations

The Committee is asked to:

- Note the contents of this report and comment on any aspects of communications and engagement activities relating to the Phase A and Phase B contracts.

1. Recycle Week 2021

- 1.1 WRAP has confirmed that this year's Recycle Week will run 20-26 September 2021. The theme will be how recycling can help fight climate change and it will be delivered under headline: 'Step it up this Recycle Week'.



- 1.2 The SLWP boroughs will once again celebrate Recycle Week, using the promotional materials provided by WRAP and working in partnership and with our commercial contractors to maximise the impact of our efforts.
- 1.3 As with last year, the focal point will be a high-profile social media advertising campaign. WRAP is creating a suite of eye-catching, static and animated social media campaign creatives which are being localised for our region by ReLondon.
- 1.4 ReLondon has commissioned a specialist media buying agency to plan and deliver a targeted social media campaign using the London-ised campaign creatives. The South London Waste Partnership has been successful in securing £4,000 of funding from ReLondon to pay for the advertising campaign to be delivered across the SLWP region. ReLondon will also be paying the social media agency fees, meaning that 100% of our £4,000 budget can be spent on advertising.
- 1.5 To support the social media advertising campaign, the Veolia SLWP Communications Team also plan to hold pop-up roadshow events in each of the four SLWP town centres during Recycle Week. This will provide an opportunity to engage directly with residents and help them understand the link between the way they manage their household waste and climate change.
- 1.6 The localised social media assets will be provided to the borough communications teams for use on council-controlled social media, digital and print communication channels.

2. Food Wave

- 2.1 The SLWP boroughs have jointly expressed an interest in being involved in ReLondon's Food Wave campaign.
- 2.2 Food Wave is a pan-European project that aims to engage young people with the topic of food and climate change, educating and inspiring them to become activists and influencers amongst their peer group and make changes to their relationship with food.

- 2.3 In London, the programme will focus on activities and workshops with small groups of disadvantaged young people, including farm visits, discussions and cookery classes supported by educational content about the impact of food and food waste on climate change.
- 2.4 The SLWP is in discussion with ReLondon about how the boroughs could support the successful delivery of the programme.

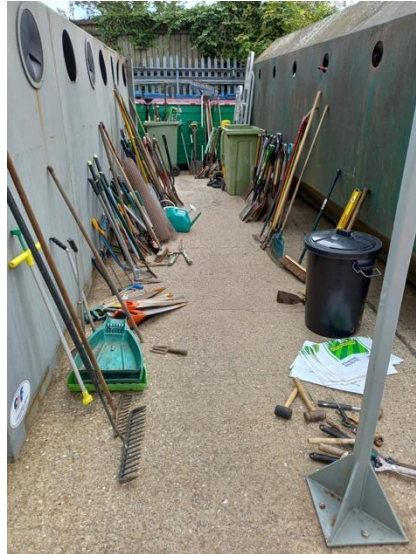
3. PHASE A BACKGROUND

- 3.1 The Phase A contracts encompass transport & residual waste management, HRRC services and marketing of recyclates.
- 3.2 From a communications and stakeholder engagement perspective, the elements of the Phase A contracts that are of most significance are:
- the management of the six Household Reuse, and Recycling Centres (HRRCs), and
 - the landfill operations at Beddington.

4. HOUSEHOLD REUSE AND RECYCLING CENTRES (HRRCs)

- 4.1 Site user customer satisfaction surveys continue to take place on a rolling basis across the sites. The findings are reported back to this Committee in the Phase A & B Contract Management Report and are also published on the SLWP website.
- 4.2 The SLWP Communications Advisor continues to support the boroughs and Veolia in ensuring that residents are aware of the Covid-secure arrangements in place at the six HRRC sites and that suitable temporary signage is in place to support appropriate use of the sites. These arrangements are working well with the sites operating smoothly.
- 4.3 The SLWP Communications Advisor provided support to Sutton Council in introducing a fair usage policy and charging for rubble waste at the Kimpton Park Way HRRC. A comprehensive communications programme, including press releases, updated online booking form, social media messages and site signage, was devised and delivered with the support of Veolia. The changes took effect from mid-July 2021.
- 4.4 Veolia and Merton Council have been working together during June, July and August to support the Hillcross Primary School Gardening Club. A joint press release was issued and social media messages shared encouraging local residents to donate their unwanted gardening

tools to the school by leaving them at a special collection point at the Garth Road HRRC. The initiative has been a success with significant volumes of gardening tools being brought to the site (see photo below).



5. BEDDINGTON LANDFILL OPERATIONS AND RESTORATION

- 5.1 This contract is operated by Viridor on behalf of the Partnership.
- 5.2 The focus of communications and engagement activities has been two-fold:
- Educating local residents and key stakeholders about the landfill operations at Beddington – i.e. how it has provided vital waste disposal capacity for hundreds of thousands of local households and businesses and how the site is being managed in order to minimise any negative environmental impacts;
 - Providing information on how the 120-hectare Beddington Farmlands site (which incorporates the landfill) is being restored into a rich patchwork of habitats for wildlife with public access.
- 5.3 Viridor are preparing the latest 'Beddington Farmlands Snapshot' to update on progress with the restoration of the old landfill site. This will include:
- Work on the meadowland, visible from the southern bird hides, to remove fencing and start mowing
 - Work to ensure the anti-predation fencing that was installed in the spring is being maintained effectively
 - Progress on arrangements to demobilise the ERF construction compound
 - The continued management of the historic sludge lagoons to the north and south of the site to maintain these habitats for nesting lapwing

- Excavation of the phase 3 restoration area down to the baseline layer, ahead of creating scrapes and islets.

6. PHASE B BACKGROUND

- 6.1 The Phase B contract (residual waste treatment) was awarded to Viridor in 2012. In order to fulfill the contract, Viridor have constructed a £205m state-of-the-art Energy Recovery Facility in Beddington. Household waste from the four Partner boroughs that has not been sorted by residents for recycling is treated at the facility and used to generate electricity.
- 6.2 The SLWP Communications Advisor continues to work closely with Viridor to:
- Ensure Viridor are meeting their contractual requirements with regards to communications and stakeholder engagement around the construction and operation of the Beddington ERF
 - Ensure local people understand why it is we need an ERF and provide reassurance around the safety of modern, well-run facilities such as this
 - Ensure the Partnership understands the views of local people with regards to waste treatment and ERF technologies in particular.

7. BEDDINGTON ERF COMMUNICATIONS AND STAKEHOLDER ENGAGEMENT

- 7.1 The focus in recent months has been on measuring, managing and communicating the carbon impact of the Partnership's residual waste treatment activities.
- 7.2 At the June 2021 meeting of the SLWP Joint Committee, Members were presented with Viridor's Carbon Management Plan for the residual waste treatment contract. The SLWP has since held a Carbon Workshop with Members of the Sutton Administration Group. A workshop had also been scheduled with the Sutton Opposition Group, but had to be re-arranged.
- 7.3 The SLWP / Viridor Carbon Steering Group met in July. From a communications and engagement perspective, it was agreed that the immediate priority was to develop a carbon section on the Beddington

ERF virtual visitor centre (www.beddingtonerf.info). It was also agreed that a three-year behaviour change strategy was required to support efforts to improve the carbon literacy of residents in relation to residual waste treatment and the difference we can all make by keeping plastic items out of the residual waste stream. The SLWP Communications Advisor will be working with Viridor to progress these two points.

- 7.4 In late May 2021, Viridor announced ambitious plans for it to become a carbon net-zero company by 2040 and net-negative by 2045. Viridor will achieve this by rolling out carbon capture technology across its fleet of energy from waste facilities - starting with the largest in Runcorn where they plan to install the technology by 2026.
- 7.5 Viridor hosted a customer roundtable event in July, where the SLWP congratulated Viridor on their ambitious carbon reduction programme; expressed a desire for the Beddington ERF to be an early adopter for any available technology; and asked Viridor to consider how carbon reduction initiatives delivered at a national level could benefit contracts at a local level.
- 7.7 Viridor will use Heritage Open Days (10-19 September 2021) as an opportunity to raise awareness of the Beddington Virtual Visitor Centre. A social media campaign will be delivered encouraging local residents to take a self-guided virtual tour, using the recently-uploaded videos to explain how waste is turned into energy.
- 7.6 Viridor continues to upload Emissions Monitoring Reports to the Beddington ERF Virtual Visitor Centre (www.beddingtonerf.info) twice per month.

8. Legal impacts and implications

- 8.1 None

9. Communications

- 9.1 This report has been drafted by the Partnership's Communications Advisor, who works closely with the four SLWP boroughs and the partnership's commercial partners to ensure communications and engagements activities support the themes agreed in the SLWP Communications Strategy 2020-2022.

10. Recommendations

- 10.1 The Committee is asked to:

- Note the contents of this report and comment on any aspects of communications and engagement activities relating to the Phase A and Phase B contracts.

This page is intentionally left blank